

1. ALUMINUM TERMINAL PADS.
2. SILVER PLATED CONTACTS.
3. ALL COPPER PARTS ARE TIN PLATED ALL OVER.
4. HOT-DIP GALV. STEEL CHANNEL BASE 64438B01H001
WITH MOUNTING CLIPS C401A012G002.
5. ALL DIMENSIONS ARE IN INCHES.

**RELIAVAC®
VACUUM
INTERRUPTER**

**TR-210
POST
INSULATORS**

**ROTATES 100°
C.C.W TO OPEN**

**18 MIN.
OPEN GAP**

**.69 X 1.25
SLOTS (4)**

**Ø.56 (2)
FOR GROUND LUG**

Ø.69 (4)

Ø1.5 (2)

Ø.56 (4) EACH END

C06A032G16

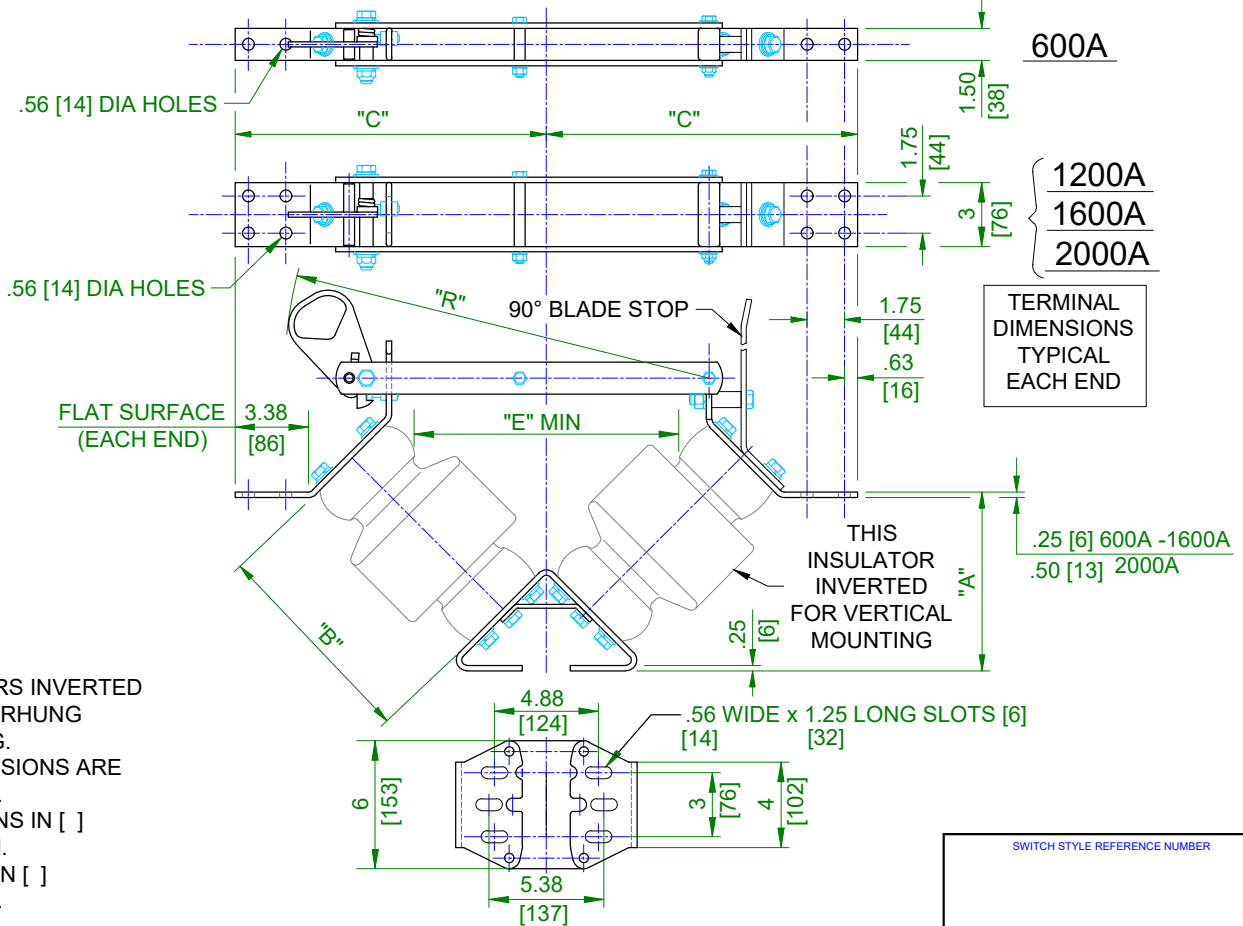
REV A

SWITCH STYLE REFERENCE NUMBER

V2-CA ALUMINUM VERTICAL BREAK DISCONNECT SWITCH
34.5 kV, 2000 A, 3" B.C. INSULATORS, 6" CHANNEL BASE

SWITCH STYLE REFERENCE NUMBER		REV
C06A032G16		A
DRAWN	DATE	VERSION
JRK	09/05/2024	1
CHECKED	DRAWING NO.	
WLW	C06A2763	
APPROVED		

GROUP NO.	RATINGS					POST INSUL NEMA TR#	DIMENSIONS IN INCHES MILLIMETERS SHOWN IN []					WEIGHT/POLE (INCL. INSUL.)	
	kV NOM.	kV MAX.	kV BIL	AMPS	kA MOM.		"A"	"B"	"C"	"E"	"R"	LBS	Kg
G01	7.2	8.3	95	600	40	202	6.69	7.50	12.69	7	16.25	40	[18.2]
G02				1200	61		[170]		[322]		[413]	45	[20.4]
G03				2000	100		6.94 [176]		12.88 [327]		16.63 [423]	51	[23.2]
G04	14.4	15.5	110	600	40	205	8.50	10	14.56	10	20.44	48	[21.8]
G05				1200	61		[216]		[370]		[519]	52	[23.6]
G06				2000	100		8.75 [222]		14.75 [375]		20.81 [529]	59	[26.8]
G07	23	27	150	600	40	208	11.31	14	17.38	12	25.44	72	[32.7]
G08				1200	61		[287]		[441]		[649]	77	[35.0]
G09				2000	100		11.56 [294]		17.56 [446]		25.81 [659]	85	[38.6]
G10	34.5	38	200	600	40	210	14.13	18	20.19	18	31.06	96	[43.6]
G11				1200	61		[359]		[513]		[789]	101	[45.9]
G12				2000	100		14.38 [365]		20.38 [518]		31.44 [799]	110	[49.9]
G13	46	48.3	250	600	40	214	16.94	22	23.03	22	36.75	131	[59.5]
G14				1200	61		[430]		[585]		[934]	136	[61.7]
G15				2000	100		17.19 [437]		23.22 [590]		37.13 [943]	147	[66.7]
G16	69	72.5	350	600	40	216	22.63	30	28.69	32	48.06	203	[92.2]
G17				1200	61		[575]		[729]		[1221]	209	[94.9]
G18				2000	100		22.88 [581]		28.88 [734]		48.44 [1234]	233	[105.8]
G19	7.2	8.3	95	1600	70	202	6.69 [170]	7.50 [191]	12.69 [322]	7 [178]	16.25 [413]	48	[21.8]
G20	14.4	15.5	110	1600	70	205	8.50 [216]	10 [254]	14.56 [370]	10 [254]	20.44 [519]	55	[25.0]
G21	23	27	150	1600	70	208	11.31 [287]	14 [356]	17.38 [441]	12 [305]	25.44 [646]	81	[36.7]
G22	34.5	38	200	1600	70	210	14.13 [359]	18 [457]	20.19 [513]	18 [457]	31.06 [789]	106	[48.1]
G23	46	48.3	250	1600	70	214	16.94 [430]	22 [559]	23.03 [585]	22 [559]	36.75 [934]	142	[64.4]
G24	69	72.5	350	1600	70	216	22.63 [575]	30 [762]	28.69 [729]	32 [813]	48.06 [1221]	217	[98.4]



Cleaveland/Price Inc. 14000 Rt. 993 Trafford, PA 15085-9550

LCO-S COPPER HOOKSTICK OPERATED DISCONNECT SWITCH
7.2-69kV 600-2000A W/ 3" BC INSULATORS

SWITCH STYLE REFERENCE NUMBER		REV
GH		J
DRAWN	DATE	VERSION
GH	11/07/1989	1
CHECKED	DRAWING NO.	
SF	C108A030	
APPROVED		

